

RIBBON

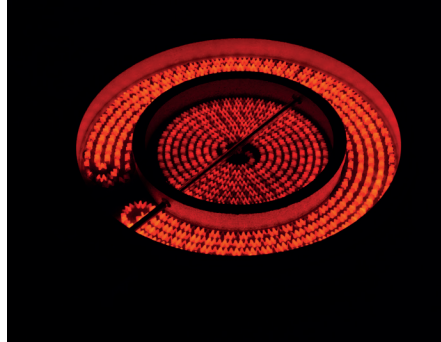
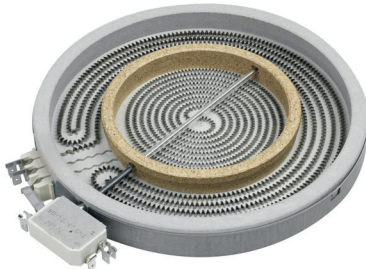
23 Series Dual zone



Heating element: RIBBON

Control: ENERGY REGULATOR or TOUCH CONTROL

Certifications: VDE, UL, CB, KC



Dual zone heaters allow more cooking flexibility with support for two different cooking pan sizes. Several outer diameters and many inner diameter size options.

Outside Diameter (mm)	Cooking Diameter (mm)	Volts (V)		Power (TOT-INT) (W)		Eika code
		From	To	From	To	
200	175-110	200	240	1500-600	2000-850	20123...
200*	175-116	200	240	1500-700	2000-850	20223...
		400	400	1800-900	2000-1000	20223...
215	190-120	200	240	1800-700	2200/800	21523...
215	190-136	200	240	1800-900	2000/1000	21623...
215*	190-120	200	240	1800-700	2200/800	21723...
230	206-120	200	240	2000-650	2200-800	23023...
230	206-140	200	240	2000-1000	2200-1200	23123...
230	206-136	200	240	2200-1000	2200-1000	23223...
230*	206-164	200	240	2000-1300	2200-1500	23323...
230*	206-120	200	240	2000-650	2200-800	23423...
230*	206-140	200	240	2000-1000	2200-1200	23523...
		230	230	3000-1200	3000-1200	23523...
		400	400	2600-1200	2600-1200	23523...
250	225-140	230	240	2200-1000	2600-1200	25023...
250*	225-140	230	240	2200-1000	2600-1200	25123...
		240	240	2200-1000	3600-1500	25123...
300	270-210	230	240	2400-1200	2700-2000	30023...
300*	270-210	230	240	2400-1200	2700-2000	30123...
		240	240	2400-1200	3200-2000	30123...

*w/o inner ring

Dimensions:

