

# RADIANT HEATERS



It works, *it's eika*

# RADIANT HEATERS BY EIKA, A WORLD LEADING COMPANY



COMPETITIVE SOLUTIONS IN QUALITY,  
SERVICE AND COST

CUSTOMERS ALL OVER THE WORLD

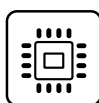
Since 1973 Eika has worked on the development of electrical components for the cooking sector. We are an internationally renowned company, a benchmark in our field and part of the Mondragon Corporation.

Eika is one of the world's leading manufacturers of components for domestic appliances.

We are committed to offer competitive solutions tailored to our customers' needs, developed in close collaboration with them. We offer our products with a consistent quality at a reasonable cost and great service. We are efficient and effective in service and pricing.



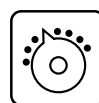
**RADIANT  
HEATERS**



**ELECTRONIC  
CONTROLS**



**TUBULAR HEATING  
ELEMENTS**



**ELECTRIC  
THERMOSTATS**



# GENERATE HEAT, TAME THE HEAT, FOCUS THE HEAT

40% of the market incorporates  
an Eika radiant heater.



Radiant heating elements provide rapid heating, with optimum energy efficiency. Heat is transferred to the heating recipient by radiation and conduction.

There are two different versions:

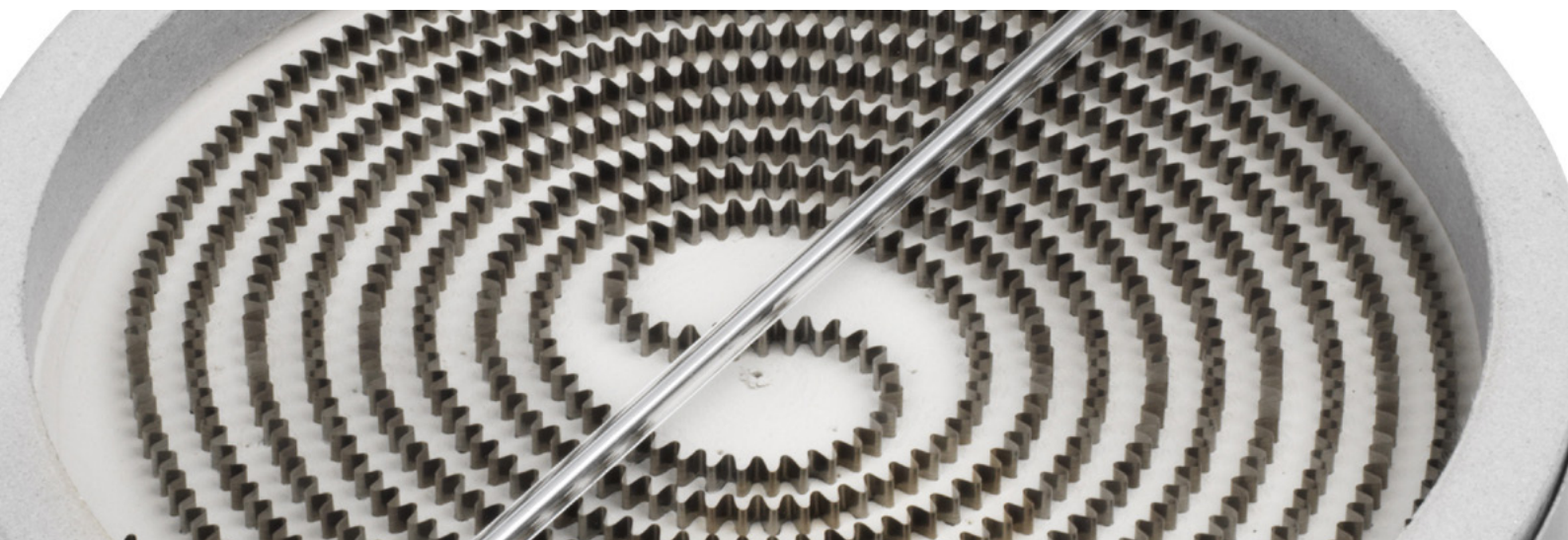
- **Ribbon** radiant heaters.
- **Coil** radiant heaters

These elements ensure a quick light-up time, in addition to optimum energy efficiency.

The insulation materials used in the manufacture of these radiant heating elements are environmentally friendly.

The thermostats assembled to the heating elements are custom-built by the company.

This thermostat can be supplied with or without residual heat indication circuit.



## WIDE RANGE OF MODELS FOR EVERY APPLICATION

### COIL

SERIES	TYPE
03 E-melt	Dual zone
07	Single zone triple circuit
08-18-28	Warmer

### RIBBON

SERIES	TYPE
20	Single zone
20 eUltra	Single zone double circuit
23	Dual zone
24	Oval heater
27	Triple zone
Oven	Rectangular heaters

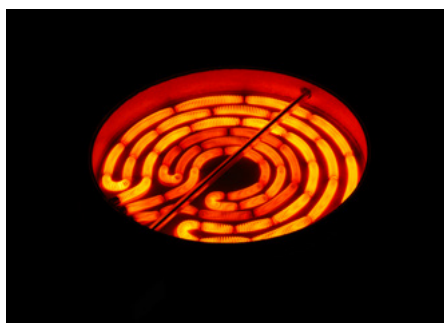


COIL

# 03 Series E-melt Dual zone



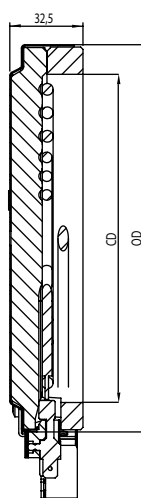
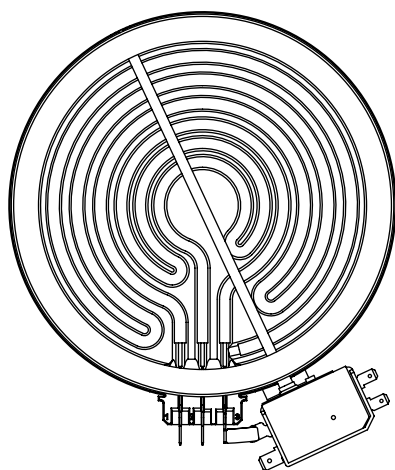
Heating element: COIL  
Control: 7-STEP SWITCH  
Certifications:



Dual zone coil heaters special for  
slow cooking, simmering...

Outside Diameter (mm)		Cooking Diameter (mm)		Volts (V)		Power (TOT-SIM) (W)		Eika code
OD		CDE-CDI		From	To	From	To	
165		140		240	240	1200-350	1200-350	16503...

## Dimensions:



COIL

## 07 Series

# Single zone triple circuit

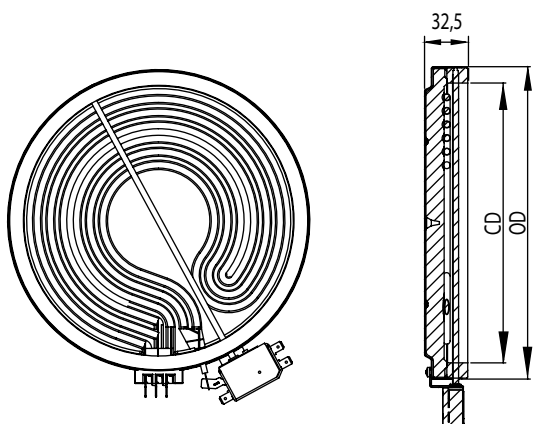
Heating element: COIL  
Control: 7-STEP SWITCH  
Certifications: VDE



This series offers a real power control, single zone, triple circuit heaters in a variety of diameters and in wide range of wattages.

Outside Diameter (mm)	Cooking Diameter (mm)	Volts (V)		Power (TOT-INT) (W)		Eika code
OD	CDE-CDI	From	To	From	To	
165	140	230	240	1200	1200	16507...
200	175	230	240	1500	1800	20007...
230	206	230	240	2100	2300	23007...

### Dimensions:



# COIL Warmer series



**Heating element:** COIL

**Control:** ENERGY REGULATOR or ELECTRONIC CONTROL

**Certifications:**UL

Special, low energy heaters designed for efficient keep-warm cooking. Provide perfect warming suitable for sauces, coffee, and many other warming needs. Different heights available.

## 08 Series

Height: 31.5 mm



## 18 Series

Height: 19 mm

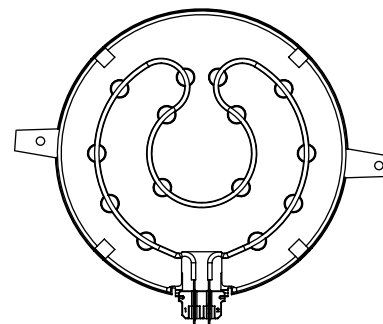
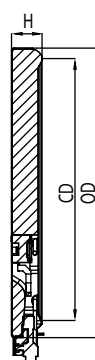
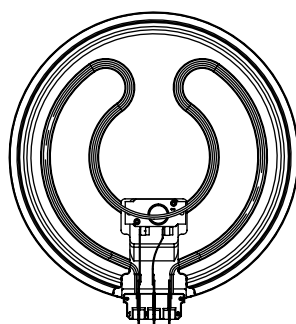
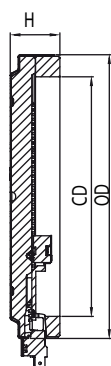
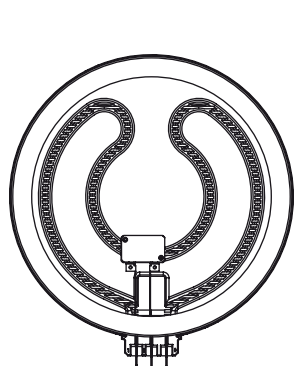


## 28 Series

Height: 12 mm



Outside Diameter (mm)	Cooking Diameter (mm)	Volts (V)		Power (W)		Eika code
		From	To	From	To	
165	145	120	240	80	140	16508...
165	125	240	240	100	100	16528...
180	160	120	240	80	140	18008...
180	160	120	240	80	140	18018...



RIBBON

# 20 Series Single zone



**Heating element:** RIBBON

**Control:** ENERGY REGULATOR or TOUCH CONTROL

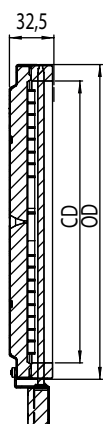
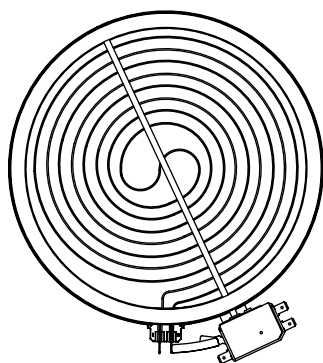
**Certifications:** VDE, UL, CB, KC



Round single zone heaters in a variety of diameters and in wide range of wattages.

Outside Diameter (mm)	Cooking Diameter (mm)	Volts (V)		Power (TOT-INT) (W)		Eika code
		From	To	From	To	
120	100	230	230	600	700	12020...
165	140	100	400	1000	1200	16520...
		220	230	1000	1100	16520...
		230	240	1200	1600	16520...
180	155	200	400	1400	1500	18020...
200	175	100	400	1350	2000	20020...
		230	240	1350	2300	20020...
215	190	200	400	1800	2000	21520...
230	206	200	400	2100	2500	23020...
250	225	100	400	2200	3300	25020...
300	270	200	400	2600	3200	30020...

## Dimensions:



RIBBON

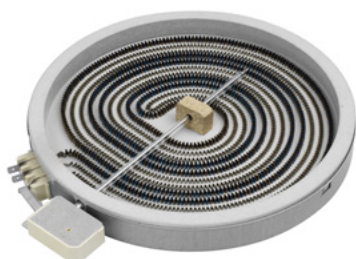


# 20 Series eUltra Single zone double circuit

**Heating element:** RIBBON

**Control:** ENERGY REGULATOR or TOUCH CONTROL

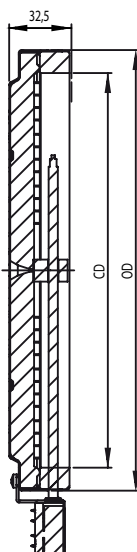
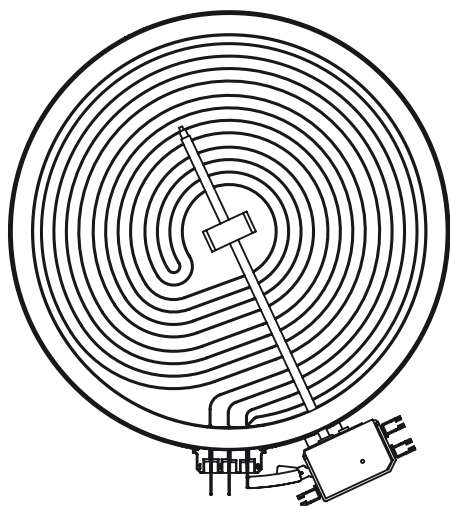
**Certifications:** VDE, UL



Our more versatile version, one for all, valid for high power cooking and slow cooking.

Outside Diameter (mm)	Cooking Diameter (mm)	Volts (V)		Power (TOT-INT) (W)		Eika code
OD	CD	From	To	From	To	
230	206	230	230	3000-900	3000-900	23120
250	225	230	240	3000-900	3400-1200	25120

## Dimensions:





RIBBON

# 23 Series Dual zone



**Heating element:** RIBBON

**Control:** ENERGY REGULATOR or TOUCH CONTROL

**Certifications:** VDE, UL, CB, KC

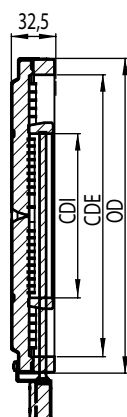
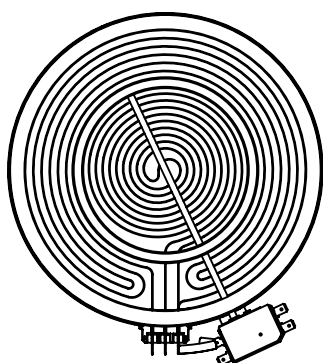


Dual zone heaters allow more cooking flexibility with support for two different cooking pan sizes. Several outer diameters and many inner diameter size options.

Outside Diameter (mm)	Cooking Diameter (mm)	Volts (V)		Power (TOT-INT) (W)		Eika code
		From	To	From	To	
OD	CDE-CDI					
200	175-110	200	240	1500-600	2000-850	20123...
200*	175-116	200	240	1500-700	2000-850	20223...
		400	400	1800-900	2000-1000	20223...
215	190-120	200	240	1800-700	2200/800	21523...
215	190-136	200	240	1800-900	2000/1000	21623...
215*	190-120	200	240	1800-700	2200/800	21723...
230	206-120	200	240	2000-650	2200-800	23023...
230	206-140	200	240	2000-1000	2200-1200	23123...
230	206-136	200	240	2200-1000	2200-1000	23223...
230*	206-164	200	240	2000-1300	2200-1500	23323...
230*	206-120	200	240	2000-650	2200-800	23423...
230*	206-140	200	240	2000-1000	2200-1200	23523...
		230	230	3000-1200	3000-1200	23523...
		400	400	2600-1200	2600-1200	23523...
250	225-140	230	240	2200-1000	2600-1200	25023...
250*	225-140	230	240	2200-1000	2600-1200	25123...
		240	240	2200-1000	3600-1500	25123...
300	270-210	230	240	2400-1200	2700-2000	30023...
300*	270-210	230	240	2400-1200	2700-2000	30123...
		240	240	2400-1200	3200-2000	30123...

\*w/o inner ring

## Dimensions:



RIBBON

# 24 Series Oval heater



**Heating element:** RIBBON

**Control:** ENERGY REGULATOR or TOUCH CONTROL

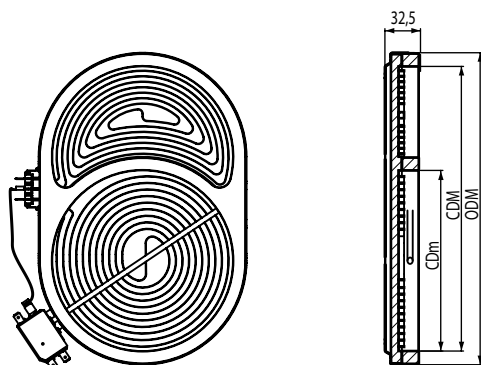
**Certifications:** VDE, UL



Oval zone heater is suitable for griddle pans, oval pots, and other pan shapes. A standard round single zone with an additional heating area for compatibility with oval pots. The bridge zone heater is great for use with standard round pots, very large griddle pans, and everything in between.

Outside Diameter (mm)	Cooking Diameter (mm)	Volts (V)		Power (TOT-CIRC) (W)		Eika code
		From	To	From	To	
ODMxODm	CDM-CDm					
270X165	250X140	200	240	1500-800	2000-1200	27024...
285X190	265X170	200	240	2000-1200	2600-1800	27024...
435X200 (Bridge)	410X175	240	240	4200-1700	4400-1800	43524...

## Dimensions:



RIBBON

27 Series

Triple zone



Heating element: RIBBON

Control: ENERGY REGULATOR or TOUCH CONTROL

Certifications: VDE, UL, CB, KC

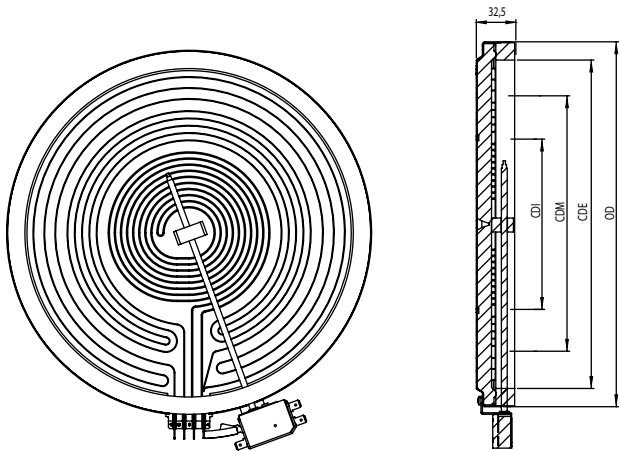


Triple zone heaters provide cooking freedom with heating options for three different cooking pan sizes. Triple zone heaters in several outer diameters and a variety of internal zone sizes.

Outside Diameter (mm)	Cooking Diameter (mm)	Volts (V)		Power (TOT-MED-INT) (W)		Eika code
		From	To	From	To	
230*	206-175-120	230	240	2300-1600-800	2300-1600-800	23027...
250*	225-175-120	230	240	2500-1600-800	3000-1800-1000	25027...
300	270-210-140	230	240	2400-1650-900	3200-2200-1150	30027...
300*	270-210-140	230	240	2400-1650-900	3200-2200-1150	30127...
		240	240	3600-2400-1400	3600-2400-1400	30127...
		240	240	4500-2950-1400	4500-2950-1400	30127...

\*w/o inner ring

Dimensions:



RIBBON

Oven series

# Radiant heaters for ovens



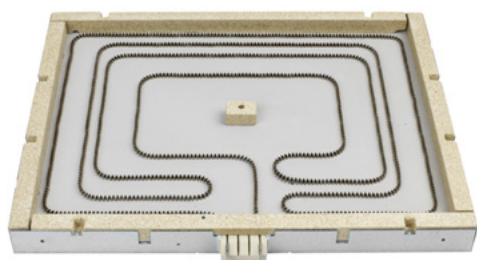
Heating element: RIBBON

Control: ENERGY REGULATOR or ELECTRONIC CONTROL

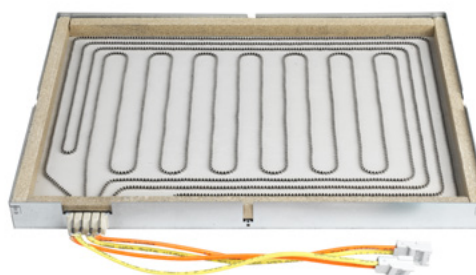
Certifications: UL

Special for griddles, ovens..

## BAKE (bottom)

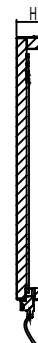
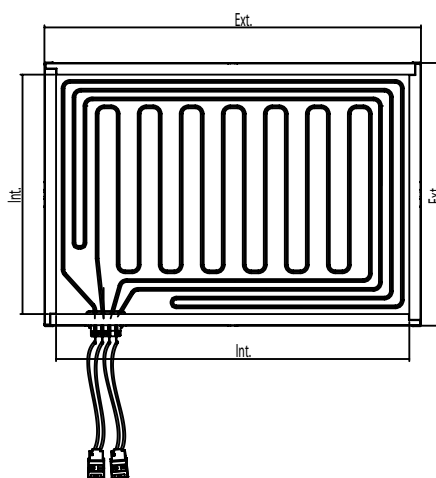
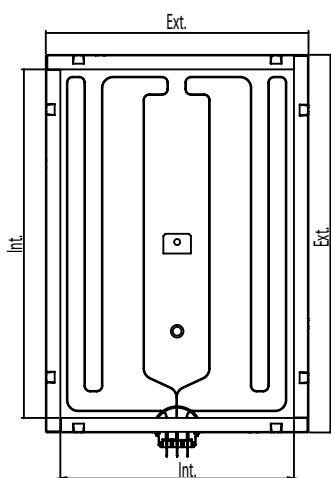


## BROIL (grill)



Outside Diameter (mm)	Cooking Diameter (mm)	Volts (V)		Power (TOT-INT) (W)		Eika code
OD	CDE-CDI	From	To	From	To	
345x240	320x215	240	240	1450	1450	43220...
345x240	320x215	120	120	1300	1300	43220...
345x280	315x250	240	240	2200	2200	43220...
430x300	400x270 - 325x198	240	240	3500-1850	3500-1850	44323...

## Dimensions:





CUSTOMER  
ORIENTATION



GLOBAL  
MANAGEMENT



TECHNOLOGICAL  
CAPABILITIES



SOLVENCY



LEAN  
MANUFACTURING



PART OF A BIG FAMILY,  
MONDRAGON  
CORPORATION

## HEADQUARTERS

Eika S.COOP.  
Urresolo, 47  
48277 Etxebarria, Bizkaia  
**SPAIN**

Tel.: +34 946 167 732  
Fax: +34 946 167 746  
E-mail: eika@eika.es

## MANUFACTURING PLANTS

EIKA MÉXICO S.A. DE C.V.  
Av. de las Misiones 10 Módulo 7  
Parque Industrial Bernardo Quintana 3ª Sección  
El Marques 76246, Querétaro  
**MÉXICO**  
Tel. +(52) 442 221 64 96  
Fax: +(52) 442 221 62 18  
E-mail: eikamexico@eikamexico.com

CZEIKA, S.R.O.  
Průmyslová, 3143/5 796 01  
Prostějov  
**CZECH REPUBLIC**  
Tel: +420 582 401 711  
Fax: + 420 582 36 04 00  
E-mail: czeika@czeika.cz

EIKA POLSKA Sp. z o.o.  
ul. GRABISZYŃSKA 233 F  
53-234 Wrocław  
**POLAND**  
Tel: +48 71 332 52 57  
FAX: +48 71 332 45 68  
E-mail: eika@eika.pl

